

PRODUCT SETUP FACT SHEET



WHAT IS BLEED?

When designing for print it is important to remember that it can be difficult to trim a job right on the edge of a design. In order to achieve the best result possible, you will need to extend your design past the trim lines, so the design can easily be cut down to size. The area that extends past your trim lines is called 'bleed'. In order to get the best results when designing for print, it's important to ensure your artwork always extends past the trim lines.



BROCHURE

297x210mm

GENERIC FACTS:

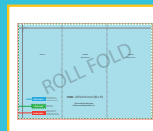
- Convert all text to outlines
- 2mm bleed requirement
- File provided in CMYK only
- Our recommended rich black break down in 40%C, 40%M, 40%Y, and 100%K
- Supplied as press ready PDF

IMPORTANT DESIGN NOTES:

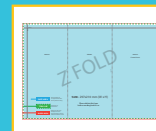
- As per industry standard colours may vary up to 5%
- For the best colour accuracy please refer to a Pantone colour guide and not your screen.

PRODUCT SPECIFICS:

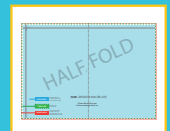
- Artwork size: 297mm x 210mm (WxH)
- Total size with bleed: 301mm x 214mm (WxH)
- Use of vector image recommended
- 2mm bleed requirement



Roll Fold
page 2 & 3



Z Fold
page 4 & 5



Half Fold
page 6

2mm bleed

297mm

210mm

97mm

100mm
Back Cover

100mm
Front Cover

ROLL FOLD

This is a fold

This is a fold

SIZE: 297x210 mm (W x H)

Please delete this layer
before sending back to us.

SAFE AREA

Place important text or image inside this blue area to prevent trimming.

TRIM LINE

Artwork will be trimmed here.

BLEED AREA

Extend your artwork to the edge of this area. Text and images on this red shaded area will be trimmed.

2mm bleed

2mm bleed

2mm bleed

297mm

210mm

100mm
Inside Front Cover

100mm

97mm

ROLL FOLD

This is a fold

This is a fold

SIZE: 297x210 mm (W x H)

Please delete this layer
before sending back to us.

SAFE AREA

Place important text or image inside this blue area to prevent trimming.

TRIM LINE

Artwork will be trimmed here.

BLEED AREA

Extend your artwork to the edge of this area. Text and images on this red shaded area will be trimmed.

2mm bleed

2mm bleed

2mm bleed

297mm

210mm

99mm

99mm

99mm
Front Cover

Z FOLD

This is a fold

This is a fold

SIZE: 297x210 mm (W x H)

Please delete this layer
before sending back to us.

SAFE AREA

Place important text or image inside this blue area to prevent trimming.

TRIM LINE

Artwork will be trimmed here.

BLEED AREA

Extend your artwork to the edge of this area. Text and Images on this red shaded area will be trimmed

2mm bleed

2mm bleed

2mm bleed

2mm bleed

297mm

210mm

99mm

99mm

99mm
Inside Front Cover

Z FOLD

This is a fold

This is a fold

SIZE: 297x210 mm (W x H)

Please delete this layer
before sending back to us.

SAFE AREA

Place important text or image inside this blue area to prevent trimming.

TRIM LINE

Artwork will be trimmed here.

BLEED AREA

Extend your artwork to the edge of this area. Text and images on this red shaded area will be trimmed.

2mm bleed

2mm bleed

2mm bleed

297mm

210mm

This is a fold

HALF FOLD

SAFE AREA

Place important text or image inside this blue area to prevent trimming.

TRIM LINE

Artwork will be trimmed here.

BLEED AREA

Extend your artwork to the edge of this area. Text and images on this red shaded area will be trimmed.

SIZE: 297x210 mm (W x H)

Please delete this layer before sending back to us.